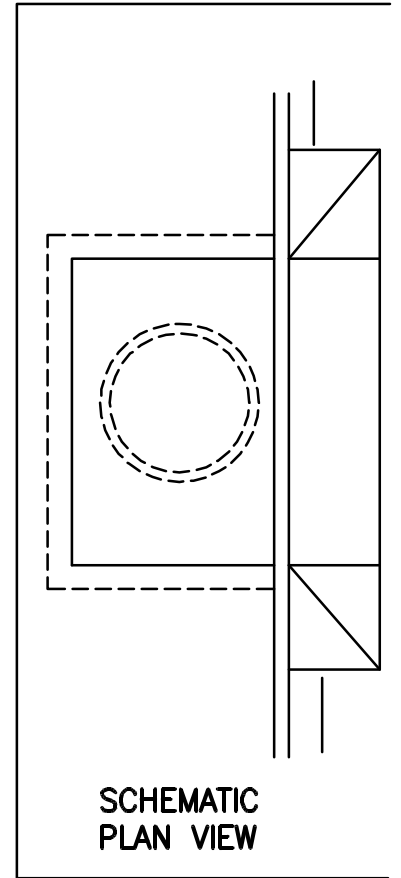
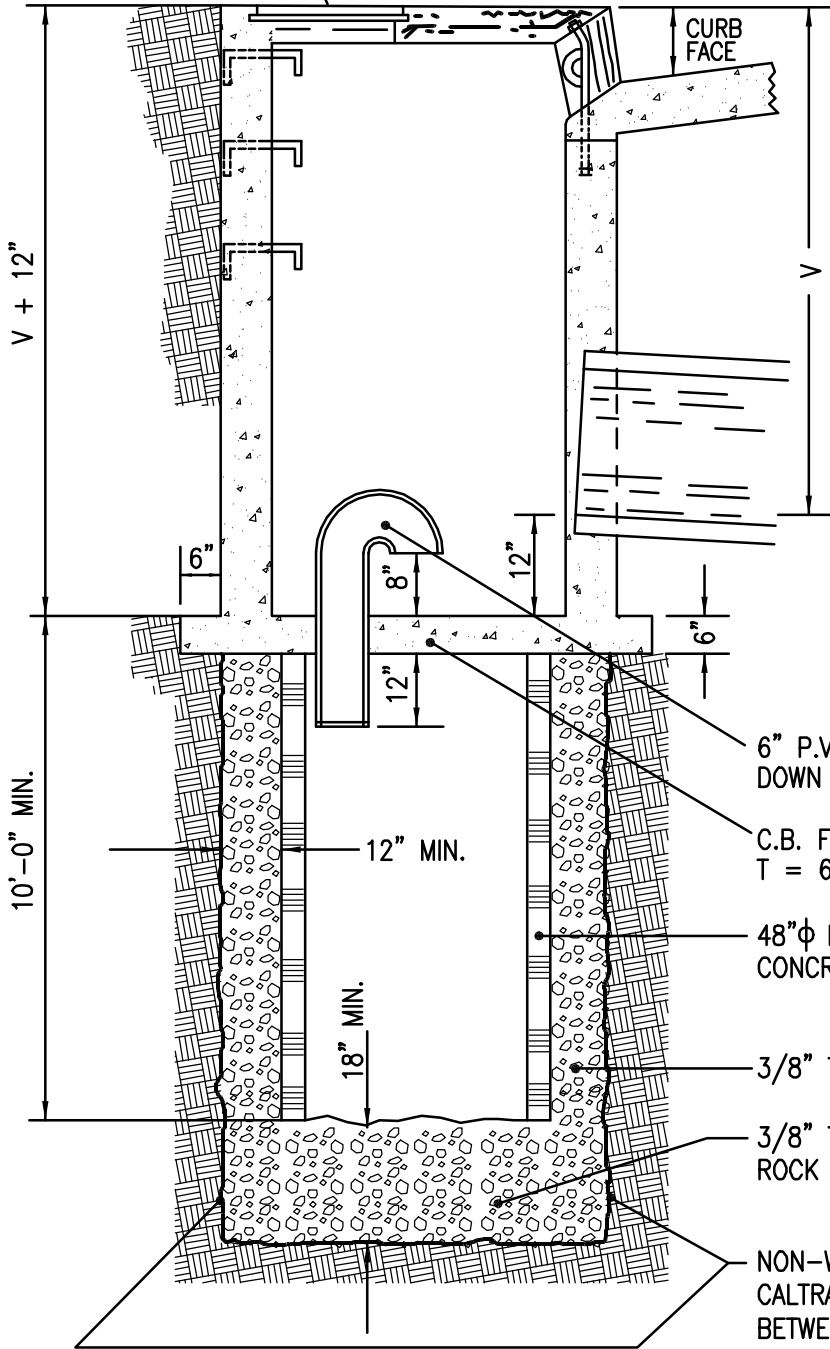


SEE RCFC & WCD STD. DWG. NO. C.B. 100
(CB NO. 1) FOR CATCH BASIN CONST.



- 6" P.V.C. OR A.B.S. DOWN DRAIN.
- C.B. FLOOR MIN. T = 6"W/#4 @ 6" EW
- 48"φ MIN. PRE-CAST PERFORATED CONCRETE RING.
- 3/8" TO 3/4" φ WASHED ROCK.
- 3/8" TO 3/4" φ WASHED ROCK ON UNDISTURBED SOIL.
- NON-WOVEN FILTER FABRIC PER CALTRANS STD. SPEC. 88-1.03 BETWEEN THE WASHED ROCK AND UNDISTURBED SOIL

DATE: SEPT. 2001

Signature on File
CITY ENGINEER

**COMBINATION CATCH BASIN/
STANDARD DRY WELL**

DEPARTMENT OF PUBLIC WORKS CITY OF PALM DESERT

SCALE: NONE

STD DRAWING NO.
111A