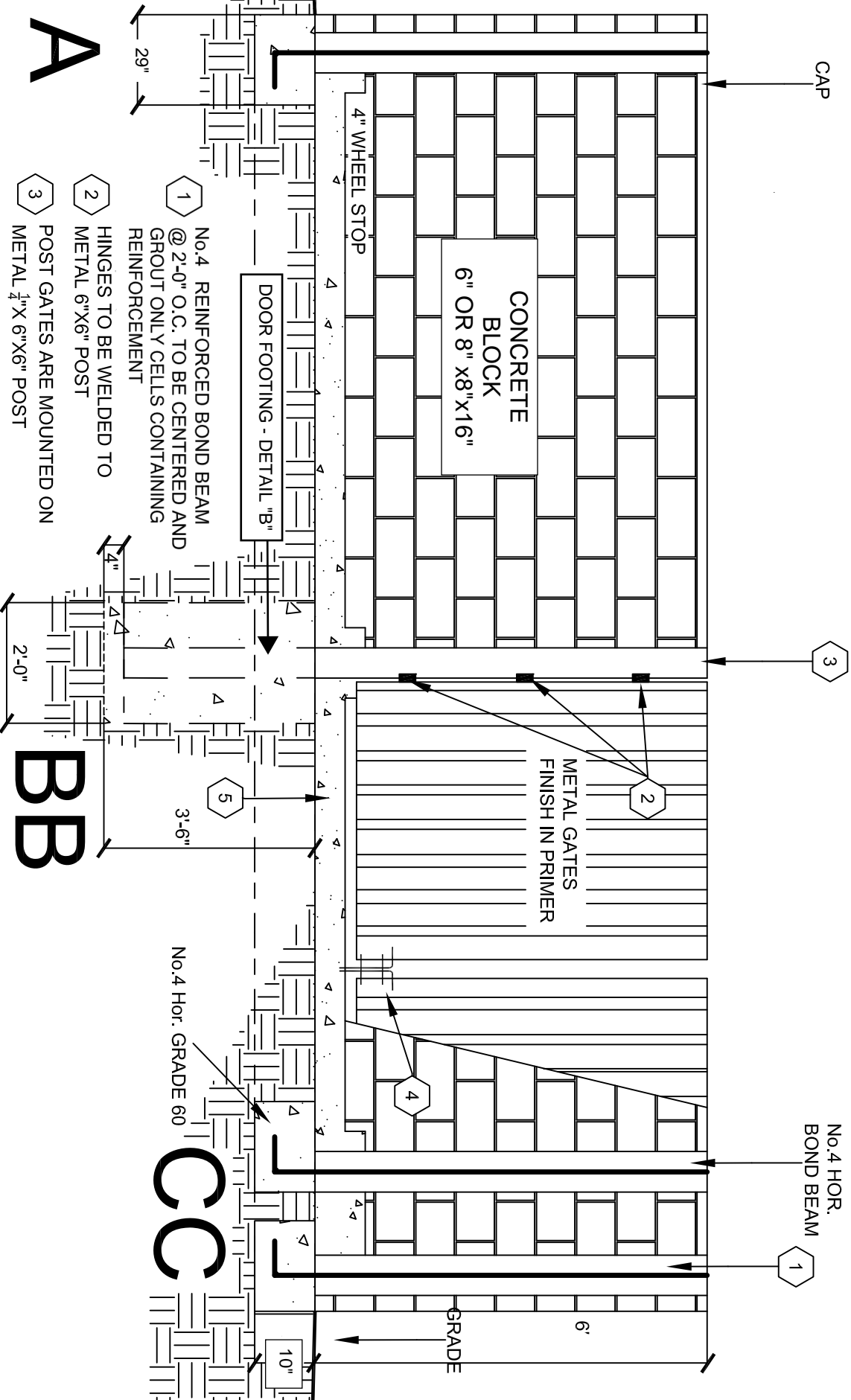


EXHIBIT A



A

- 1 No. 4 REINFORCED BOND BEAM @ 2'-0" O.C. TO BE CENTERED AND GROUT ONLY CELLS CONTAINING REINFORCEMENT
- 2 HINGES TO BE WELDED TO METAL 6"X6" POST
- 3 POST GATES ARE MOUNTED ON METAL 1/4" X 6" X 6" POST
- 4 LATCHES TO BE 3/4" DIA. MOUNTED TO METAL GATES
- 5 CONCRETE SLAB TO BE 6" MIN. THICKNESS

BB

CCC

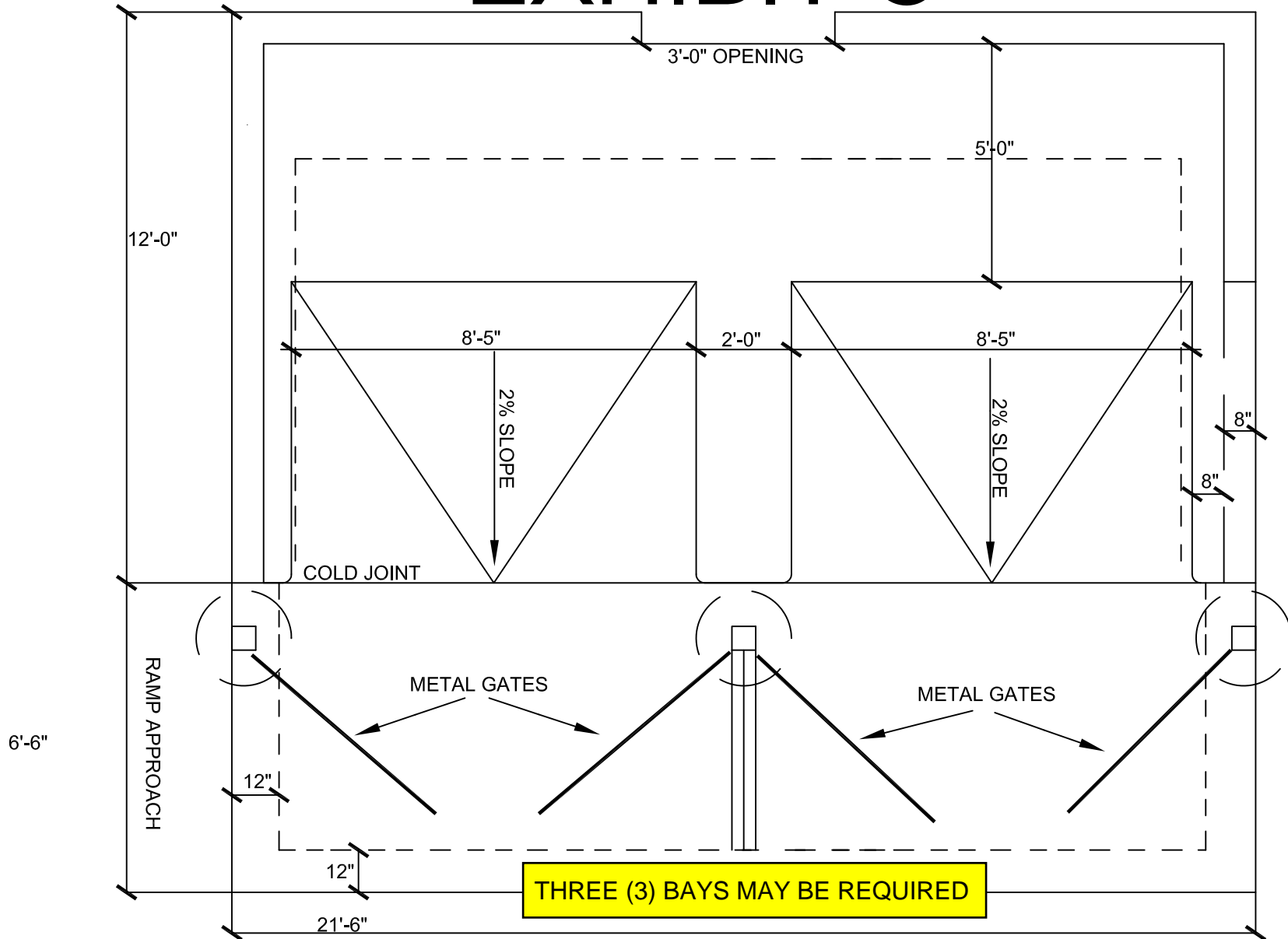
Elevation View
Not to Scale

Rev 01/24/18



City of Palm Desert
Solid / Recycling / Organics
Trash Enclosure

EXHIBIT C



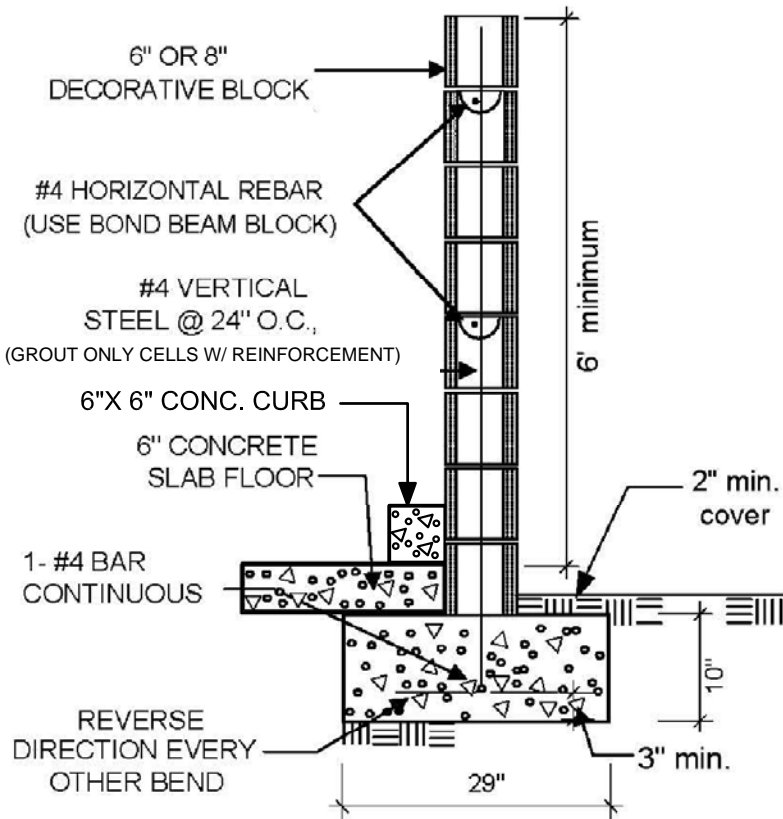
Elevation View
Not to Scale

Rev. 01/24/18



City of Palm Desert
Solid Waste / Recycling/ Organics
Trash Enclosures

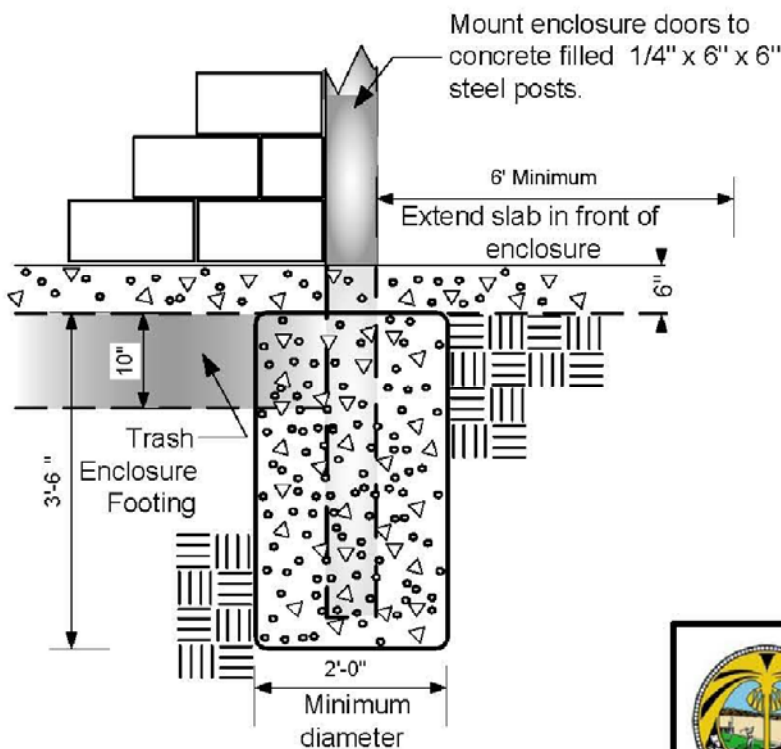
SHEET 2 OF 2



**BLOCK ENCLOSURE
DETAIL "A"**

CONSTRUCTION STANDARDS

- 1.) Walls are to be of decorative block, masonry, or similar materials. (Not precision block)
- 2.) Gates are to be solid construction.
- 3.) Pedestrian access is required if in multi-family or multi-tenant areas. Consult with the Building Department for those requirements.
- 4.) Double swing gates shall have the swivel spots outside of the opening area of the enclosure. Swivel points shall be attached to concrete filled steel posts/cOLUMNS at ends of walls.
- 5.) Enclosure shall be on a level pad at ground level. The area between the pad and the pick up area shall be paved area 6" deep for the width of the enclosure and shall not exceed a grade of 2 percent.
- 6.) Enclosures shall be configured, at a minimum of 12' deep and 24'-2" wide and a 6' high decorative wall with a sight obscuring gate, unless otherwise approved by the Director of Special Programs. (Specific design criteria refer to Exhibit A, B, or C)
- 7.) Each bay shall have a separate pair of gates/doors that comply with item #2 above.
- 8.) Minimum wall and gate height to be 6'-0"
- 9.) 6" x 6" concrete curb



**DOOR FOOTING
DETAIL "B"**


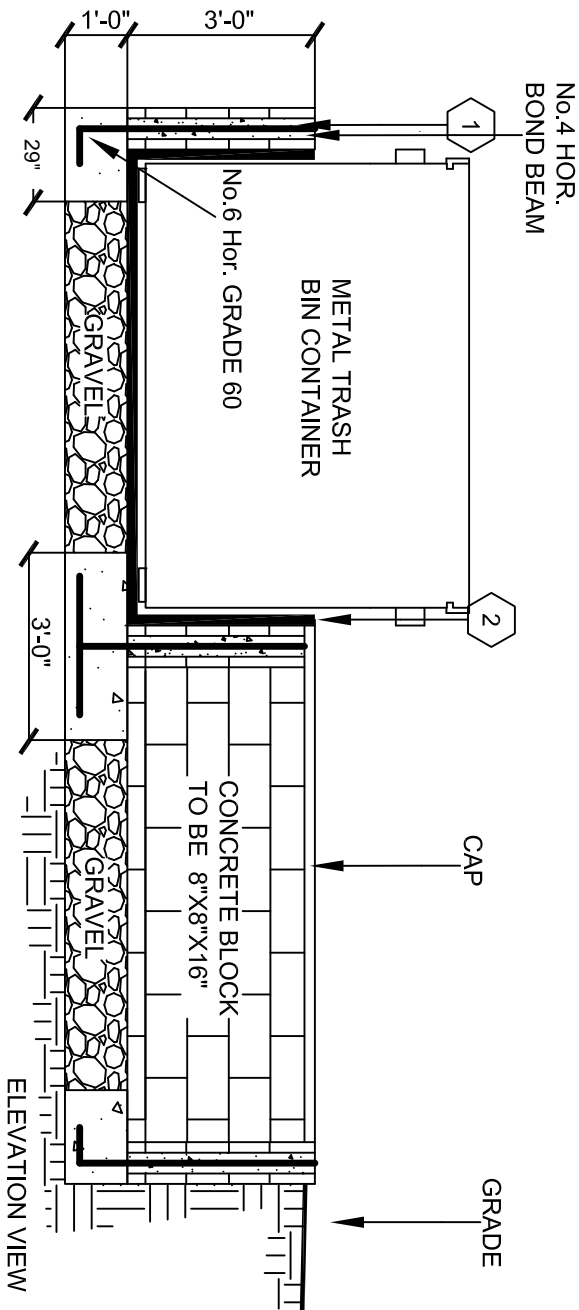
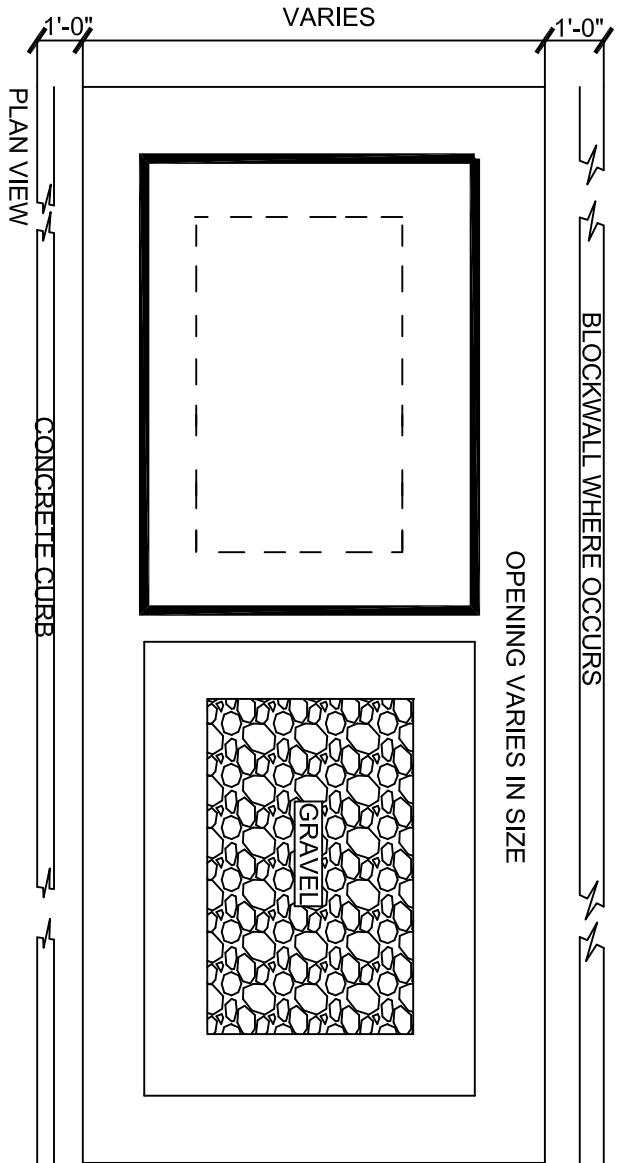
	CITY OF PALM DESERT BUILDING DEPARTMENT		
	Block Wall and Door Footing Detail		
Ph: (760) 776-6420	73-510 Fred Waring Dr.. Palm Desert, CA. 92260		
Fax: (760) 776-6392	01/24/18		2 of 2

EXHIBIT B



1 No. 4 REINFORCED BOND BEAM @ 2'-0" O.C. TO BE CENTERED AND FULLY GROUTED

2 METAL TRASH LINER



NOT TO SCALE

Rev 01/24/18



City of Palm Desert
Solid / Recycling / Organics
Trash Enclosure