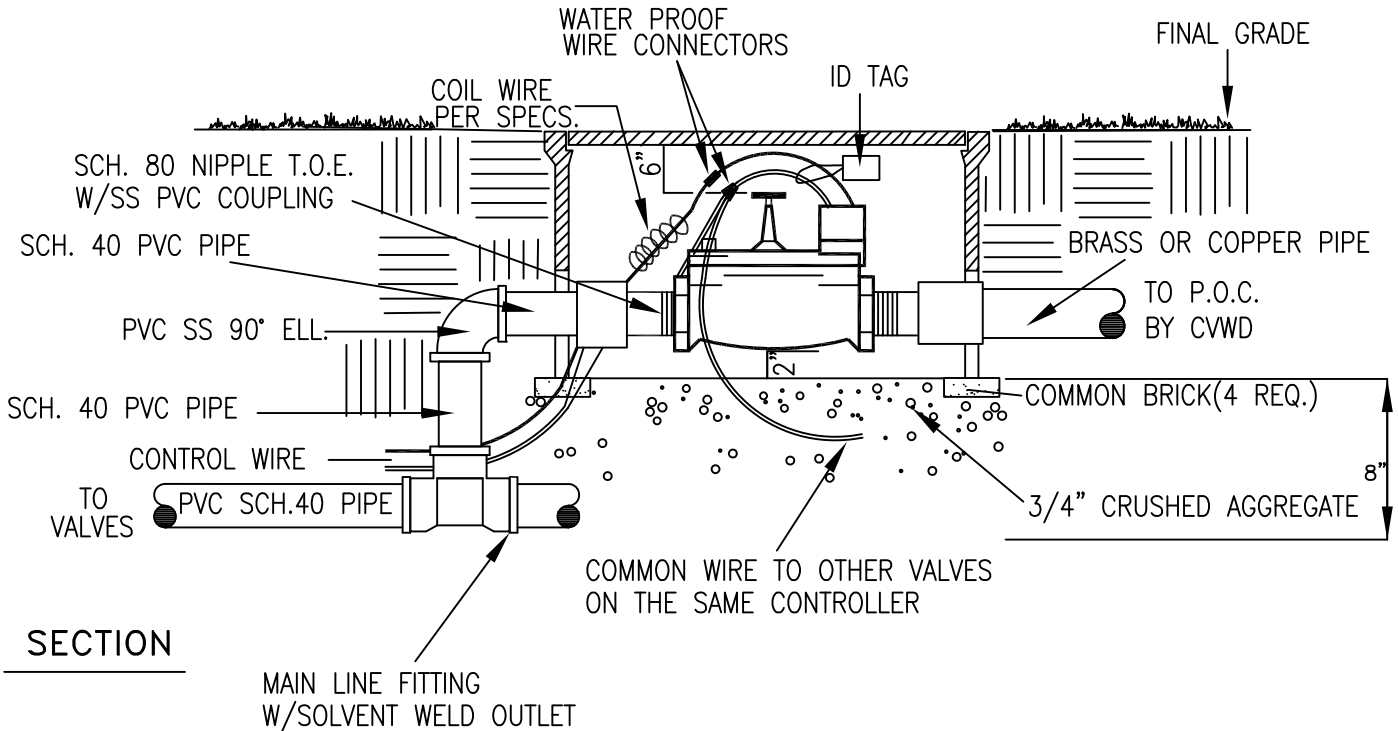


MCV

PLAN



SECTION

NOTES:

RAIN BIRD GB SERIES ELEC. CONTROL VALVE
OR APPROVED EQUAL

RECTANGULAR VALVE BOX W/GREEN BOLT DOWN COVER
IN TURF AND TAN IN SHRUB BEDS

HEAT BRAND VALVE STATION NO. ON LID 2" HIGH CHARACTERS

ALL FITTINGS AND PIPE TO BE EITHER BRASS OR COPPER
FROM POINT OF CONNECTION TO CONTROL VALVE ASSEMBLY

CONTROL WIRES FROM CONTROLLER TO BE COLOR ORANGE
UNLESS OTHERWISE SPECIFIED BY THE CITY OF PALM DESERT

ALL CONNECTORS TO BE WATERPROOF

DATE: MARCH 2008

MASTER VALVE ASSEMBLY DETAIL

SCALE: NONE

Signature on File
LANDSCAPE MGR.

LANDSCAPE DIVISION

CITY OF PALM DESERT

STD DRAWING NO.

014